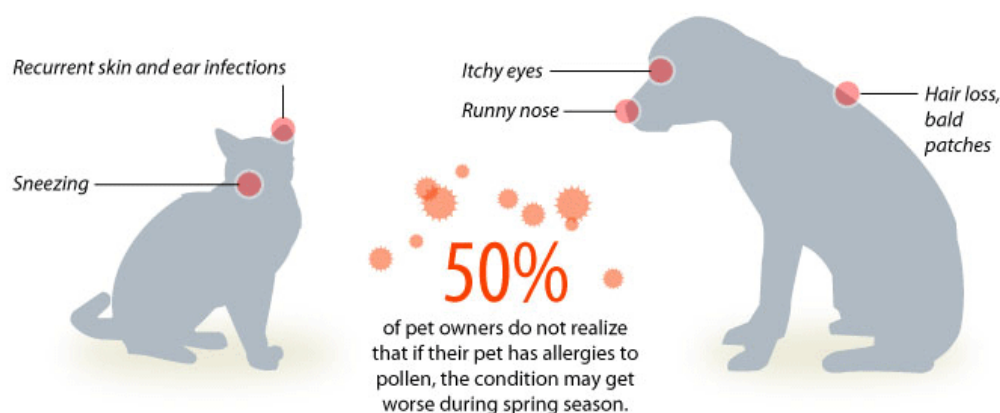


# Seasonal Allergies in Dogs and Cats

Many pets suffer from allergies. Excessive licking, biting and scratching that allergies cause, can put dogs and cats at risk for more serious problems like skin infections.

## Symptoms

Symptoms tend to be seasonal, often worsening when the weather warms and plants start to pollinate. However, many pets with allergies develop year-round symptoms.



## Common Allergens



**Flea bites** are the number one cause of allergic reactions in pets. The bite of just one flea is enough to send flea-allergic pets into fits of itching and scratching.

**TREATMENT**  
Flea control program; Monthly spot-on medication that kills adult fleas and disrupts the lifecycle of the parasite to prevent more fleas from hatching and maturing.



**Pollens, molds, dust mites, storage mites, dander and other environmental substances** that are inhaled or come in contact with the skin.

**TREATMENT**  
1. Repeated injections of a serum containing allergens to decrease the immune system's sensitivity to them.  
2. Symptomatic treatment with medications that help dampen the pet's allergic response.



**Ingredients in food** that initiate an allergic reaction when eaten. Food allergies not only cause itchy skin, but can also cause vomiting and diarrhea.

**TREATMENT**  
Rigorous food trial, during which time, a dog or cat can only eat a diet that does not contain common allergens like beef, dairy, fish, etc.